



Sage Fixed Assets 2017.1

Release Notes

January 2017

© 2017 The Sage Group plc or its licensors. All rights reserved. Sage, Sage logos, and Sage product and service names mentioned herein are the trademarks of The Sage Group plc or its licensors. All other trademarks are the property of their respective owners.

Sage End User License Agreement (EULA): <http://na.sage.com/sage-na/eula>

Contents

Features	4
Tax updates	4
Sage Advisor Update.....	4
Copy Customized reports	5
Help menu changes.....	5
Enhancements	6
Group manager	6
Check for updates	7
Fixes	8
Annual Projection report (Premier Depreciation only)	8
Asset Detail view (Premier, Standard and Network Depreciation)	8
Attachments	8
Book fields.....	8
In-place conversion Help	8
Fully depreciated assets on reports (Premier Depreciation only)	8
Property Tax Summary report	8
Bar code reader Description field (Tracking only).....	8

Features

In this release, Sage is excited to announce the addition of the following new features. Refer to the table below to see which features are applicable to your Sage Fixed Assets products.

Products	Features			
	Tax Updates	Sage Advisor Update	Copy Customized Reports	Help menu changes
Sage Fixed Assets Depreciation (Premier, Network and Standard)	✓	✓	✓	✓
Sage Fixed Assets Tracking (Premier, Network and Standard)		✓		✓
Sage Fixed Assets Planning (Premier, Network and Standard)		✓		✓
Sage Fixed Assets Lite Depreciation	✓	✓		✓
Sage Fixed Assets Lite Depreciation for Sage 50	✓	✓		✓
Sage 50 Fixed Assets	✓			✓

Tax updates

The following tax changes are reflected in Sage Fixed Assets:

- The Section 179 limits were increased for assets placed in service in 2017.
- The depreciation limits for Property Type T– Light Trucks and Vans were increased for vehicles placed in service in 2017.
- Form 4562 was updated to generate the 2016 Form 4562–Depreciation and Amortization.
- For Canadian organizations, two tax classes are added for Eligible Capital Property (ECP).

Sage Advisor Update

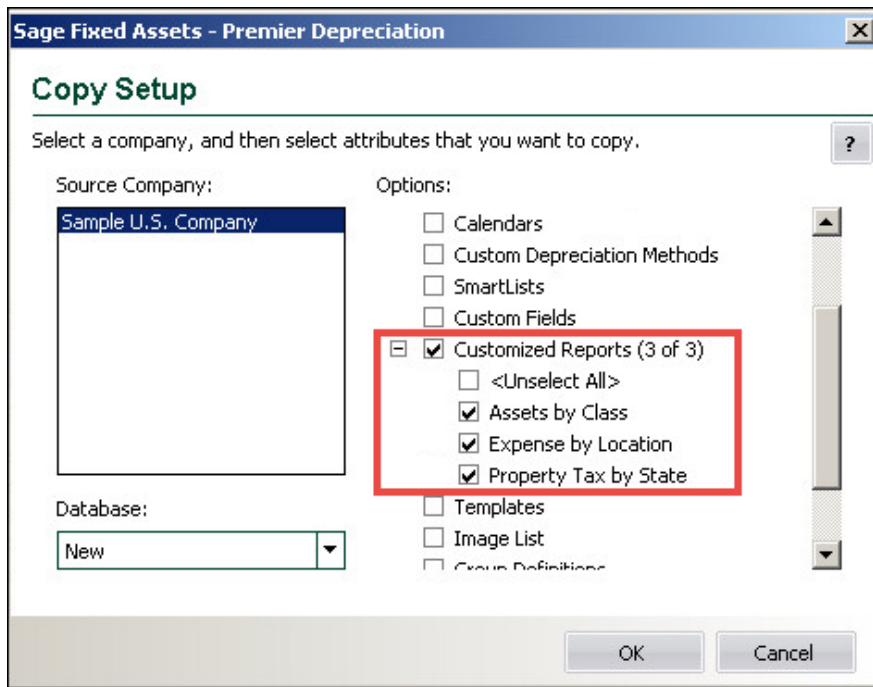
Sage Advisor Update is a program that recognizes your installed products and notifies you of available releases. This feature makes it easier than ever to keep your products current— simply download the latest release from Sage Advisor Update when notified.

If you are using Sage Fixed Assets 2017.0, Sage Advisor Update will notify you when the 2017.1 release is available and will provide you with a link to download it.

Copy Customized reports

The Copy Setup dialog box (**File > New Company or Edit Company > Copy Setup**) now includes a list of your customized reports by company. This allows you to choose which ones to copy from the company instead of having to copy all (or none) of them.

Click the button next to the Customized Reports option to show your reports.



Help menu changes

The Help menu is updated and reorganized to make it easier for you to find the information you need and to provide a more consistent experience if you use multiple Sage products.

Additionally, documents such as the User guides and Depreciation Fundamentals are now accessed by selecting **Help > Product Documents**. You can download or bookmark the documents as needed.

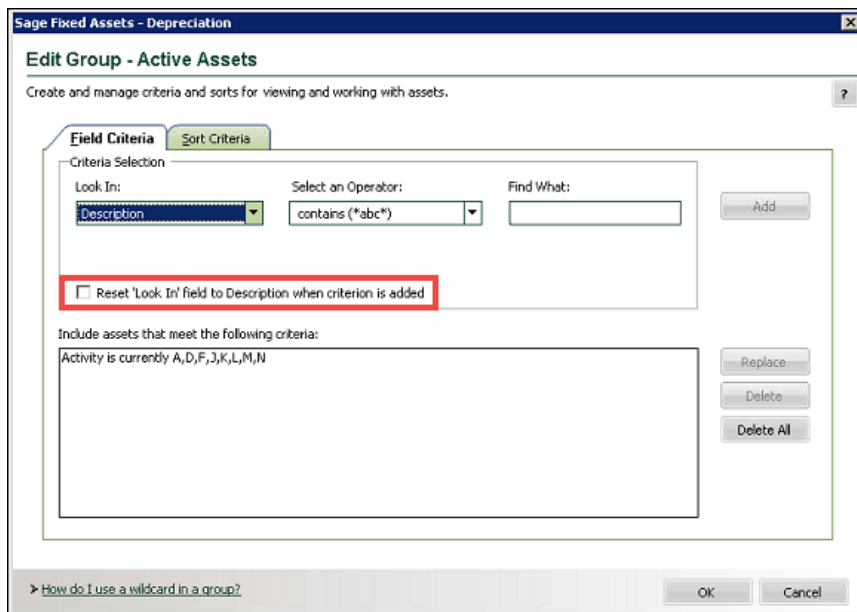
Enhancements

With this release, Sage made the following customer requested enhancements. Refer to the table below to see which enhancements are applicable to your Sage Fixed Assets products.

Products	Enhancements	
	Group manager	Check for updates
Sage Fixed Assets Depreciation (Premier, Network and Standard)	✓	✓
Sage Fixed Assets Tracking (Premier, Network and Standard)	✓	✓
Sage Fixed Assets Planning (Premier, Network and Standard)		✓
Sage Fixed Assets Lite Depreciation	✓	✓
Sage Fixed Assets Lite Depreciation for Sage 50	✓	✓
Sage 50 Fixed Assets	✓	

Group manager

When editing or creating a group, you now have the option to retain the last selected “Look in” field when adding selection criteria to groups. Simply uncheck the option to **Reset ‘Look in’ field to Description when criterion is added** on the Add Group or Edit Group dialog box (**Customize > Group Manager > Add or Edit**).



Check for updates

You can check for product updates anytime by selecting **Help > Sage Advisor Update**. Sage Advisor Update will search for your product and list any available updates.

Fixes

With this release, Sage made the following fixes to the indicated Sage Fixed Assets products. Fixes with no specific product notation apply to all products that include the feature.

Annual Projection report (Premier Depreciation only)

The Annual Projection report for the Tax book no longer shows incorrect amounts for an AAP calendar company when run with Internal book with a different AAP calendar, unless the AMT book was also run at the same time as the Tax book.

Asset Detail view (Premier, Standard and Network Depreciation)

Attachments

Attached PDFs or images no longer display multiple copies in the Asset Detail view if the attachment was initially associated with both Depreciation and Tracking, and then later deleted in Depreciation only.

Book fields

All values are now saved in the Asset Detail view if copy and paste was used from one book field to another book. You no longer need to tab out of the field before saving.

In-place conversion Help

You can now access the corresponding Help file for the In-place Conversion dialog box.

Fully depreciated assets on reports (Premier Depreciation only)

Fully depreciated assets now appear on reports. Applicable to 52/53 week calendars in Premier; and only for limited placed-in-services dates.

Property Tax Summary report

The Property Tax Summary report now runs if the Quantity field is the Property Tax Category on the report.

Bar code reader Description field (Tracking only)

The asset Description field is no longer truncated to 39 characters if the asset's data is edited on the bar code reader.